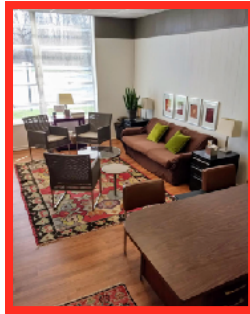




**Rector's Office**  
 13'W X 23'L  
 Exec. Desk  
 Seating for  
 8 - 12  
 Private access



**Kitchen**  
 16' W X 22' L



**Parking Lot**  
 50 spaces on the Asphalt  
 ( 8 Handicap Spaces )  
 Overflow on the Gravel & Grass  
 40 spaces

**High Speed Wi-Fi**  
 Internet throughout the entire  
 building complex for zoom  
 meetings and live-streaming.

**NOTES**



**Welcome to St. Timothy's  
 Community Asset-Mapping Event**

February 27, 2025



Sponsored by:

**Building Capacity Squared "CB2"**

A Lilly Endowment Inc. Grant

&

**Partners for Sacred Places**

Philadelphia, PA

Presenters:

**Kevin P. Block PhD**

Director of Special Initiatives, Philadelphia

**Caroline Lauber**

Consulting Associate, Chicago

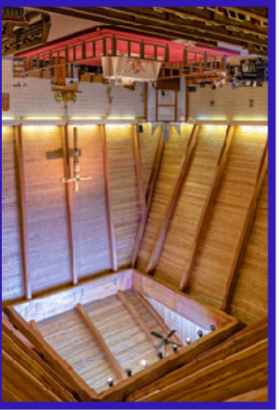
Hosted by:

**The Rev. Rebecca Nickel, Rector  
 and St. Tim's BC2 Planning Team**

2601 E. Thompson Road

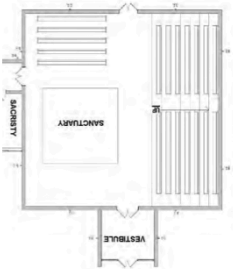
Indianapolis, IN 46227

StTimsIndy.org



**Sanctuary / Nave**  
56' W X 56' L X 56' H

Platform: 22' X 22'  
Pew Seating: 228 (12per)  
[ 60 Flats & 168 in Risers ]  
( + 24 Chairs in Choir )  
up to approx. **265** Total



- Rodger's Concert Organ
- Baby Grand Piano
- Sound System
- Live-Streaming available



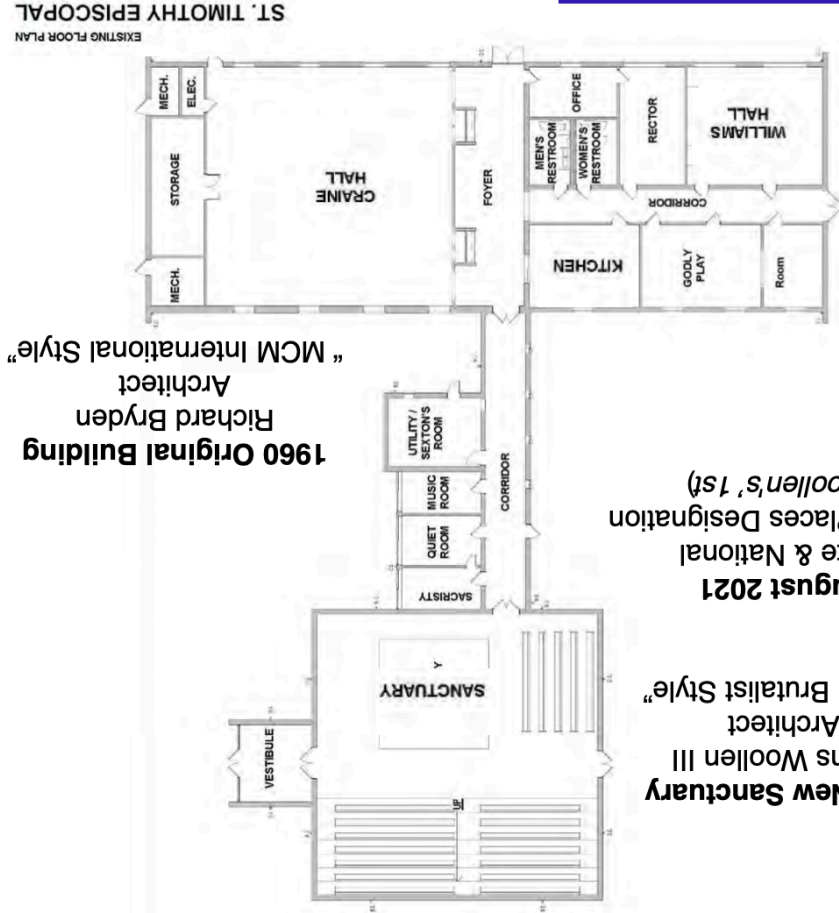
**Craine Hall**  
48' W X 50' L X 10' H  
2,400 Sq.Ft.  
Capacity for:  
Lecture seating -160  
16 - Long tables -128  
Public address and A/V  
sound system available



**William's Hall**  
23' W X 26' L  
Conf. Table 14 +



**1969 New Sanctuary**  
Evans Woolen III  
Architect  
"MCM Brutalist Style"  
**August 2021**  
State & National  
Historic Places Designation  
(Woolen's 1st)



**1960 Original Building**  
Richard Bryden  
Architect  
"MCM International Style"

EXISTING FLOOR PLAN  
ST. TIMOTHY EPISCOPAL

